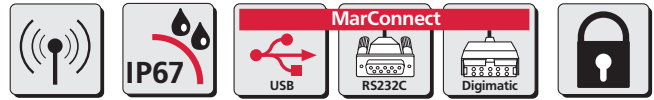


Digital Depth Gage MarCal 30 EWR according to protection class IP67



REFERENCE

Merkmale

Functions:

ON/OFF
 RESET (Set display to zero)
 mm/inch
 PRESET (enter a numerical value)
 Reference-Lock/Unlock
 DATA (Data transmission via connection cable)
 Auto-ON/OFF

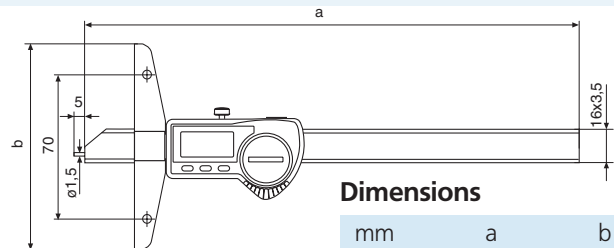
- Immediate measurement due to the Reference system
- Excellent resistance against dust, coolants and lubricants, protection class IP67
- MarConnect data output, choose alternatively: USB, OPTO RS232C or Digimatic

- Dirt wipers are integrated in the slide
- Life of the battery up to 3 years
- Max measuring speed 2.5 m/s (100"/s)
- High contrast LCD with 8.5 mm high digits
- Lapped guide way

- Beam and cross beam are made of hardened stainless steel
- Locking screw
- Supplied with: Case, battery, operating instructions

Technical Data

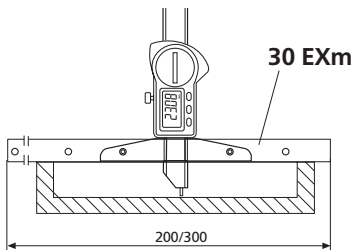
Measuring range		Resolution	Error limit	Order no.
mm	(inch)	mm / inch	G mm	
150	(6")	0.01 / .0005"	0.03	4126700
300	(12")	0.01 / .0005"	0.04	4126701
500	(20")	0.01 / .0005"	0.05	4126702



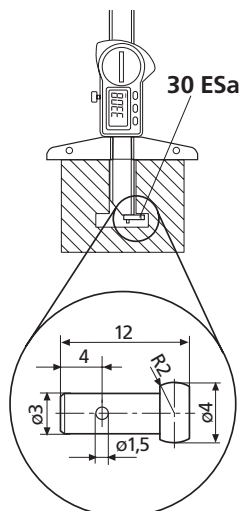
Dimensions

mm	a	b
150	234	100
300	384	150
500	584	150

Depth measurement



Distance measurement



Accessories

	Order no.
Battery 3V, Type CR 2032	4102520
Data Connection Cable USB (2 m)	16 EXu 4102357
Data Connection Cable Opto RS232C (2 m), with SUB-D jack 9-pin	16 EXr 4102410
Data Connection Cable Digimatic (2 m), Flat plug 10-pin	16 EXd 4102411
Cross Beam Extension 200 mm	30 EXm 4126511
300 mm	30 EXm 4126510
Anvil for distance measurement to be fixed to the measuring pin	30 ESa 4125611

Accessories for Data Processing see Chapter 11

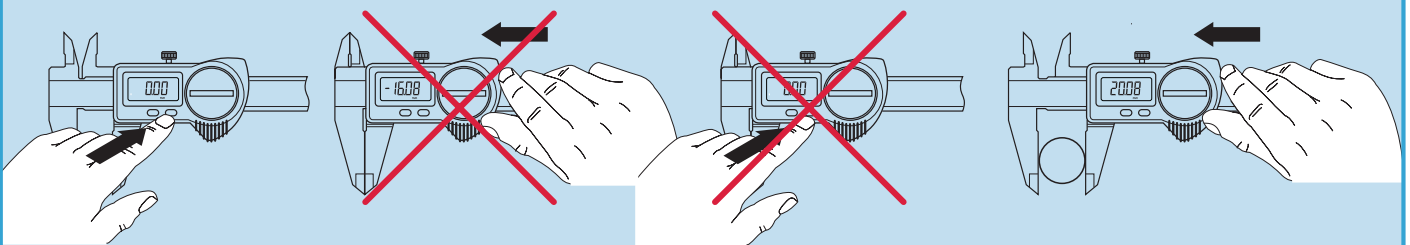
MarCal - The innovative Reference-System

Just set once to zero

All Mahr digital calipers with this logo **REFERENCE** are equipped with the innovative Reference-System. The zero position just has to be set once: after setting the zero position, the zero remains stored for all further measurements. Therefore, once the caliper is switched ON or the slide is moved the caliper is immediately ready for measurement. The need to reset to zero with a conventional caliper once the caliper is switched on has now become obsolete.

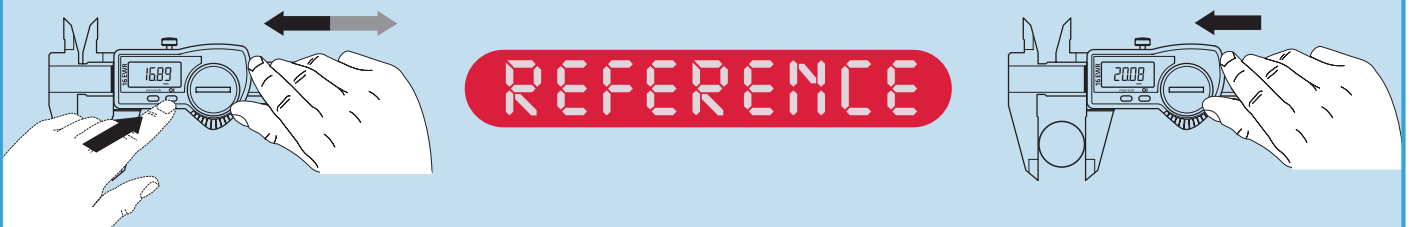
Conventional

- ① Switch ON ② Close the measuring jaws ③ Set to zero ④ Results of measurement



REFERENCE - System

- ① Switch ON ② Results of measurement



Press the ON key or move the slide

IP-Protection classes

First digit is the degree of protection according to IEC 60529		Second digit is the degree of protection according to IEC 60529 (approximate)	
Protection against particles, contaminants and dust		Protection against wet conditions (fluids)	
0	Not protected	0	Not protected
1	Particles > 50.0 mm	1	Falling water drops - vertical
2	Particles > 12.5 mm	2	Falling water drops - tilted < 15°
3	Particles > 2.5 mm	3	Spray water < 60°
4	Particles > 1.0 mm	4	Water splashing from all directions
5	Dust protected	5	Water jets from all directions
6	Dust tight	6	Powerful water jets
		7	Temporary immersion in water
		8	Continuous immersion in water



Example:
IP67 means that the product is "Dust tight" and is protected against "Temporary immersion in water".