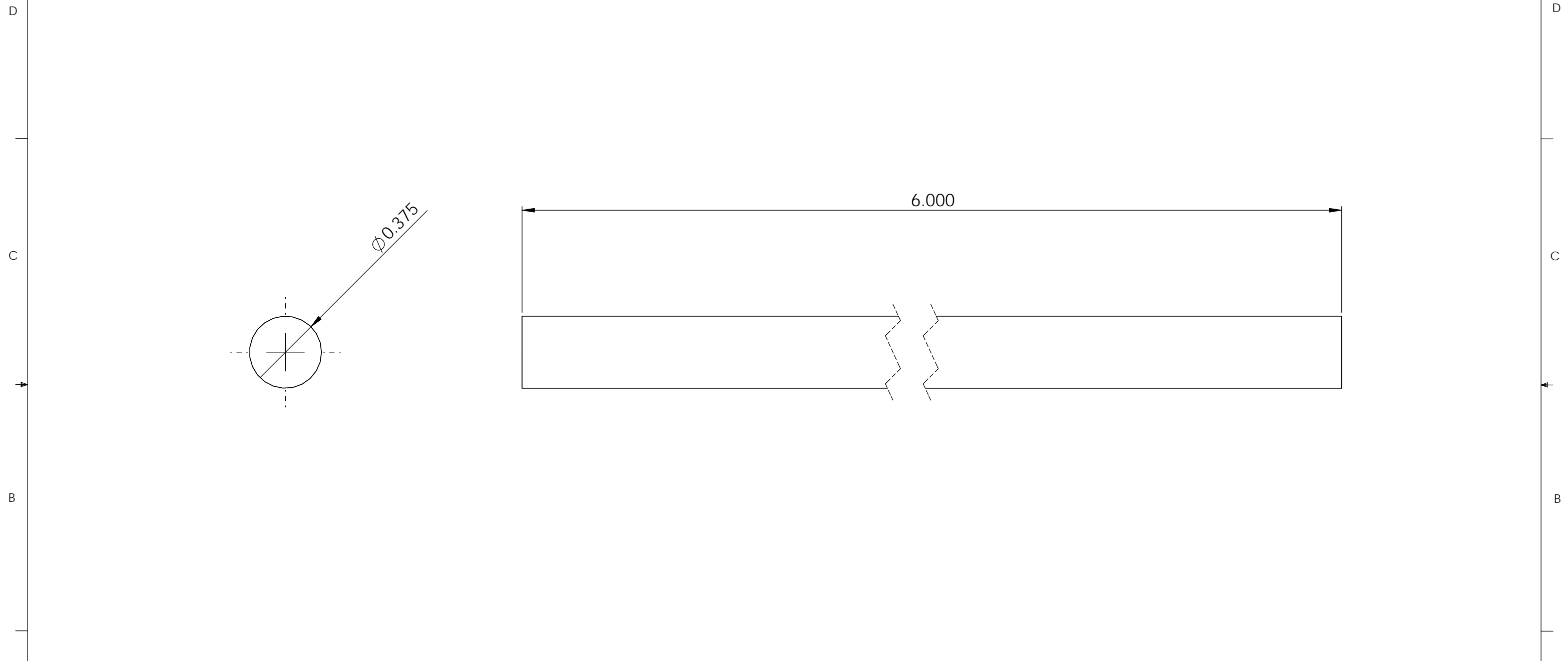


No. COMPONENTS IN ASSLY	OP1	OP2	OP3	OP4	OP5	OP6
-------------------------	-----	-----	-----	-----	-----	-----



PrymeFix
 fixturing solutions

155 PRAIRIE LAKE RD, SUITE A
 EAST DUNDEE, IL 60118
 847.428.7122

FILE NAME
 N13-375-XXX-88915K21

DIRECTORY
 P:\Manufacturing\PrymeFix Product Line\C11 & N11 Corner Inserts & Nests\N13-PRY-STD-001\

PROPRIETARY AND CONFIDENTIAL

THE INFORMATION CONTAINED IN THIS DRAWING IS THE SOLE PROPERTY OF PRYMEFIX. ANY REPRODUCTION IN PART OR AS A WHOLE WITHOUT THE WRITTEN PERMISSION OF PRYMEFIX IS PROHIBITED.

1		UNLESS OTHERWISE SPECIFIED FRACTIONAL ± .003 ANGULAR: ± 1.0 TWO PLACE DECIMAL ± .010 THREE PLACE DECIMAL ± .003 FOUR PLACE DECIMAL ± .0005 (REAM)	DRAWN BY: AK	DATE 8/5/2014	
2			TITLE: N13-375-006 GUIDE RAIL		
3					
4			HEAT TREAT N/A	No Pcs to Complete Order:	
5			MATERIAL Alloy Steel (SS) 303		
6			FINISH N/A		
7			INCH UNITS	SCALE: 1:1	WEIGHT: 0.18
REVISION HISTORY					