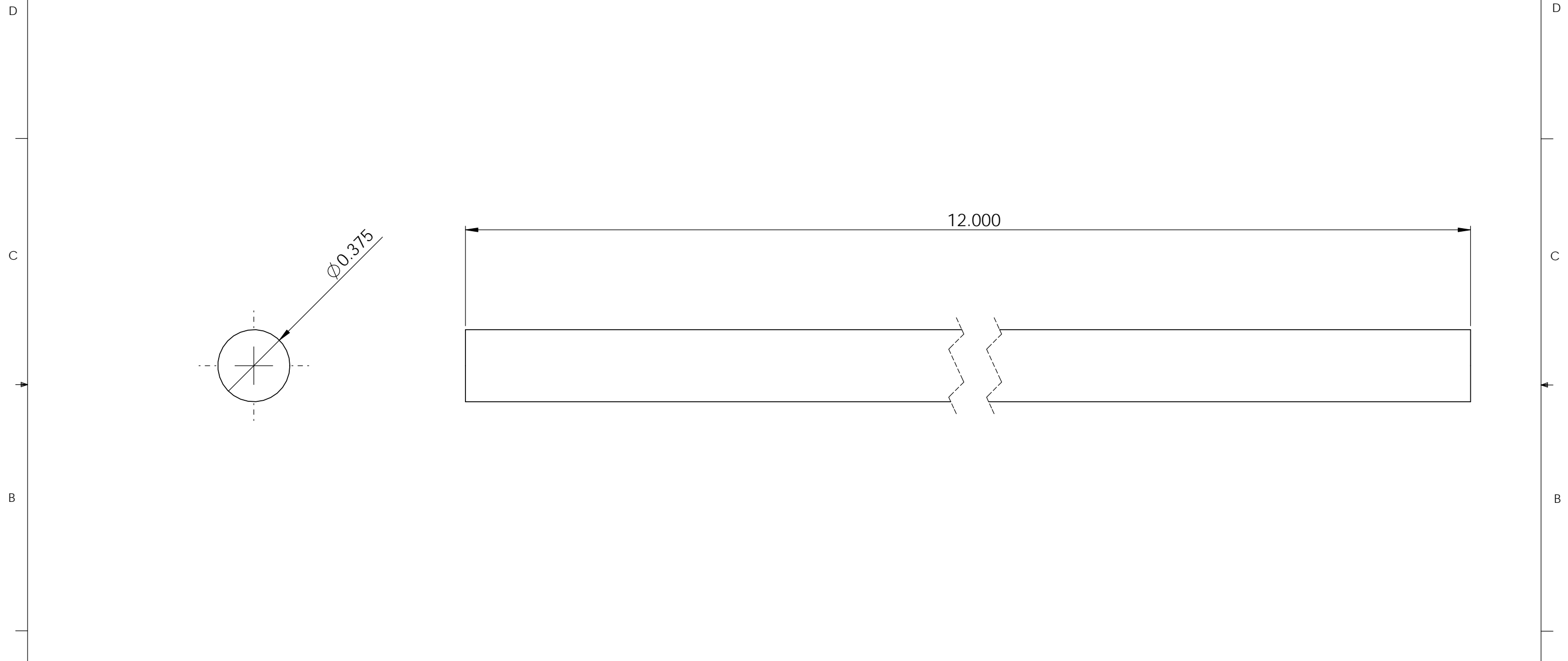


No. COMPONENTS IN ASSLY	OP1	OP2	OP3	OP4	OP5	OP6	1
-------------------------	-----	-----	-----	-----	-----	-----	---



PrymeFix
 fixturing solutions

155 PRAIRIE LAKE RD, SUITE A
 EAST DUNDEE, IL 60118
 847.428.7122

FILE NAME	N13-375-XXX-88915K21
DIRECTORY	P:\Manufacturing\PrymeFix Product Line\C11 & N11 Corner Inserts & Nests\N13-PRY-STD-001\

PROPRIETARY AND CONFIDENTIAL

THE INFORMATION CONTAINED IN THIS DRAWING IS THE SOLE PROPERTY OF PRYMEFIX. ANY REPRODUCTION IN PART OR AS A WHOLE WITHOUT THE WRITTEN PERMISSION OF PRYMEFIX IS PROHIBITED.

1		UNLESS OTHERWISE SPECIFIED	DRAWN BY:	AK	DATE	8/5/2014
2			TITLE: N13-375-012 GUIDE RAIL			
3		FRACTIONAL ± .003 ANGULAR: ± 1.0 TWO PLACE DECIMAL ± .010 THREE PLACE DECIMAL ± .003 FOUR PLACE DECIMAL ± .0005 (REAM)	No Pcs to Complete Order:			
4			HEAT TREAT	N/A		
5			MATERIAL	Alloy Steel (SS) 303		
6		FINISH	N/A			
7		REVISION HISTORY	INCH UNITS	SCALE: 1:1	WEIGHT: 0.37	SHEET 8 OF 10
			SIZE	DWG. NO.	REV	
			B	N13-PRY-STD-XXX Prints	0	