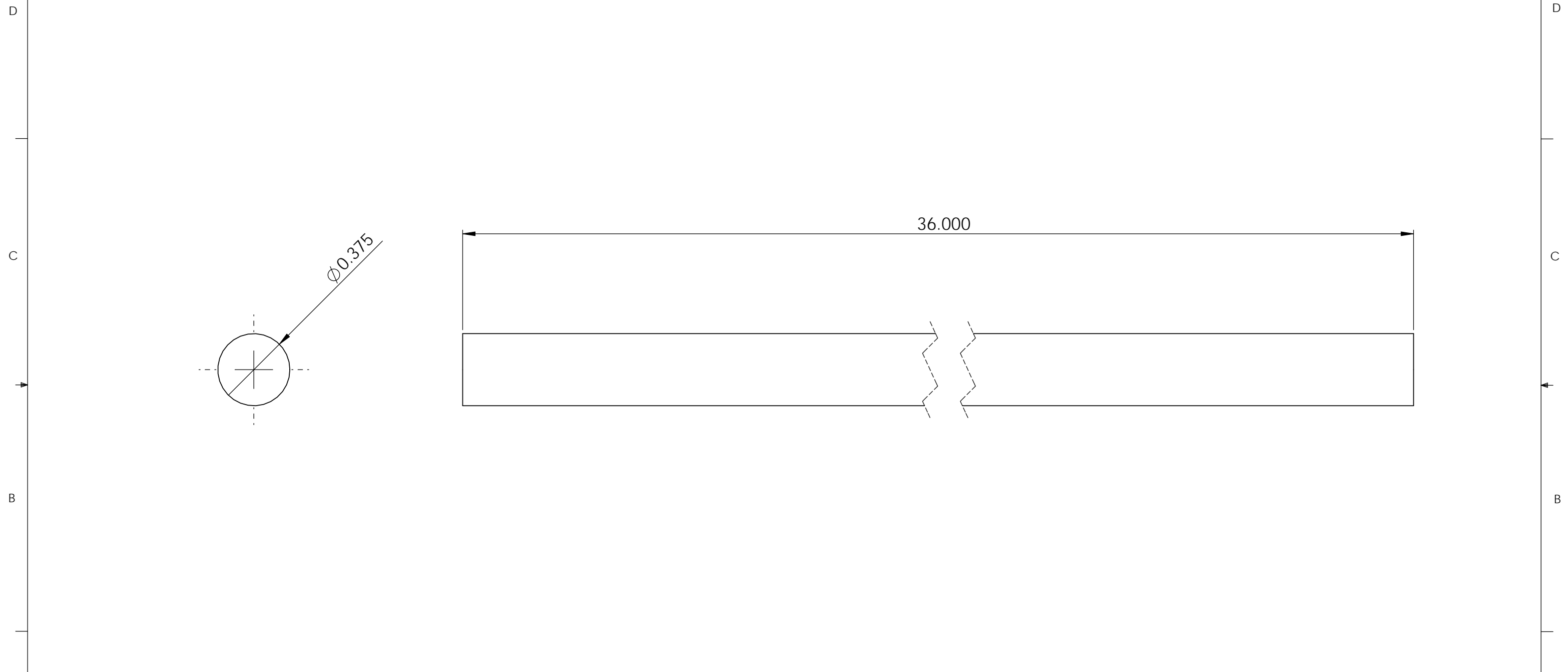


No. COMPONENTS IN ASSLY	OP1	OP2	OP3	OP4	OP5	OP6	1
-------------------------	-----	-----	-----	-----	-----	-----	---



**PrymeFix**  
 fixturing solutions

155 PRAIRIE LAKE RD, SUITE A  
 EAST DUNDEE, IL 60118  
 847.428.7122

FILE NAME  
 N13-375-XXX-88915K21

DIRECTORY  
 P:\Manufacturing\PrymeFix Product Line\C11 & N11 Corner Inserts & Nests\N13-PRY-STD-001\

**PROPRIETARY AND CONFIDENTIAL**

THE INFORMATION CONTAINED IN THIS DRAWING IS THE SOLE PROPERTY OF PRYMEFIX. ANY REPRODUCTION IN PART OR AS A WHOLE WITHOUT THE WRITTEN PERMISSION OF PRYMEFIX IS PROHIBITED.

1		UNLESS OTHERWISE SPECIFIED	DRAWN BY: <b>AK</b>	DATE: 8/5/2014
2			TITLE: N13-375-036 GUIDE RAIL	
3		FRACTIONAL ± .003 ANGULAR: ± 1.0 TWO PLACE DECIMAL ± .010 THREE PLACE DECIMAL ± .003 FOUR PLACE DECIMAL ± .0005 (REAM)	No Pcs to Complete Order:	
4			HEAT TREAT <b>N/A</b>	
5			MATERIAL <b>Alloy Steel (SS) 303</b>	
6		FINISH <b>N/A</b>	SIZE <b>B</b>	DWG. NO. N13-PRY-STD-XXX Prints
7				REV <b>0</b>
REVISION HISTORY			SCALE: 1:1	WEIGHT: 1.11
		INCH UNITS	SHEET 10 OF 10	