

ALUFIX

Basic Kits

Starter-Kits, optimal selection of basic modular elements and accessories



STARTER KIT A

#83131-1 Screw clamp
with ball joint, foot plate and extension, 371g

- max clamping width 25 mm
- extension 100 mm



STARTER KIT B

#83132-1 Screw clamp
with ball joint, swivel arm and screw clamp, 936g

- max clamping width 50 mm
- arm length 280 mm (2x140)
- hydraulic central clamping
- workpiece can be fixed in any position



STARTER KIT C

#81020-1 Clamping element set
M6, 69 Pcs., 650g

Comprising:

- 20 clamps in different shapes and lengths
from 45 to 85mm
- 24 threaded rods M6 in 6 lengths
from 25 to 150mm
- 4 coupling nuts, 10 knurled nuts and 10 washers

C·E ALUFIX preferred range
Green: Item is available immediately.
C: Classic version, E: Eco version, CE: Classic or Eco
■: color "black"

STARTER KIT D

#83134-1 Hold down spring
and hold down stud with M6 thread, 40g

Comprising:

- Hold down spring L=60mm
- Hold down stud L=60mm (other length on request)
- One reducer sleeve each with thread M8, M10 und M12



STARTER KIT E

#83135-1 Vise
with pins, jaw width 50 mm, 810g

- high tensile aluminium
- exchangeable jaws
- clamping width 65 mm

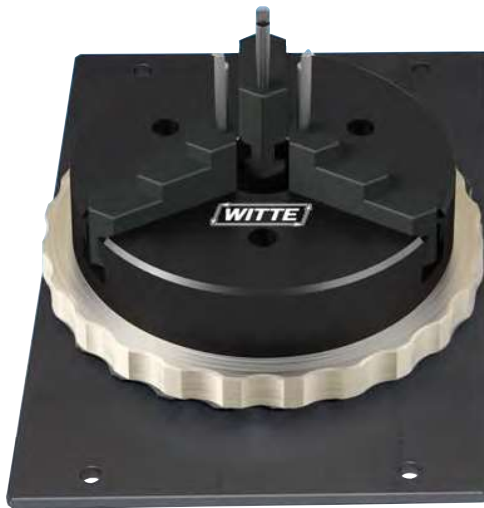


STARTER KIT F

#82080-1 Keyless chuck
with reversible jaws, D80, 368g

- high tensile aluminium
- centric clamping
- diameter 80mm





STARTER KIT G

#96092-1 Basic Set
 Clamp accessory kit for measuring machines
 (23-pcs), 9,8kg

Nr.	Qty.	Name
96106-1	1	Keyless chuck $\varnothing 125$, 3 jaws
96107-1	1	Vise 50 AF25
24605-1	3	Pin for vise AF25
22258-1	3	Hod down spring
54766-1	3	Hold down stud AF25
54767-1	3	Hold down stud AF25
13086	4	Screw with knurled grip
21286-1	4	Washer $\varnothing 6,4$
96315	1	Storage box with inlay

Keyless chuck and vise mounted on aluminium plate

